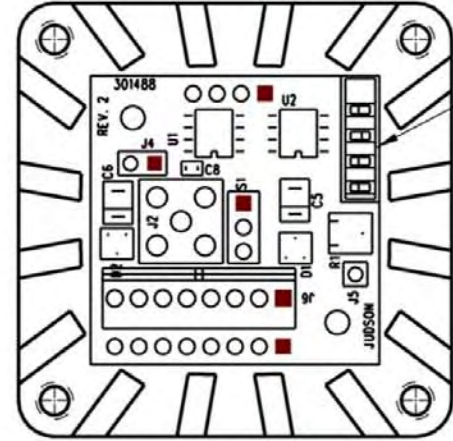
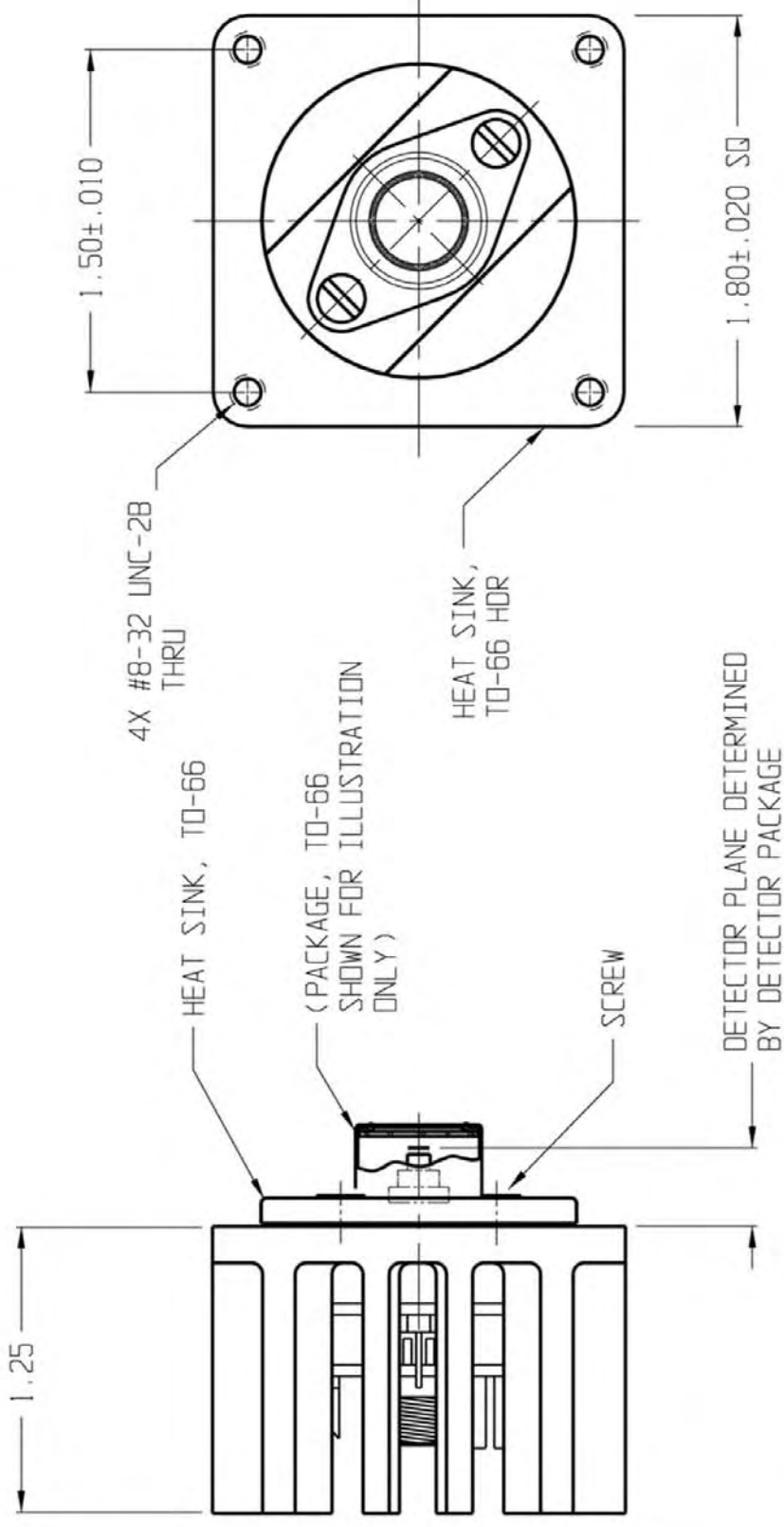
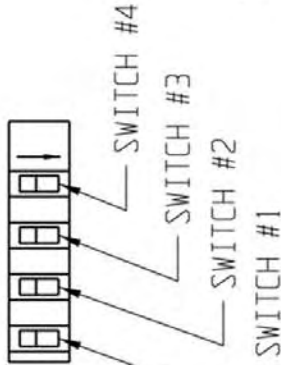


REVISIONS			
REV	DESCRIPTION	DATE	APPROVED
0	INITIAL RELEASE	07/14/98	KWM/HJD
1	CHANGES PER DCN 403414	03/18/03	AK/DFG



SEE VIEW "A"



DETAIL "B"

SWITCH SETTING				
GAIN	SI-1	SI-2	SI-3	SI-4
100 K	X			N/A
1 M		X		N/A
10 M			X	N/A

X DENOTES SWITCH CLOSED.
 * NOTE: SWITCH MUST BE IN DIRECTION OF ARROW TO BE CLOSED.

TELEDYNE
 JUDSON TECHNOLOGIES
 A TeleDyne Technologies Company

221 DUMPERY DRIVE
 HONDIKERVILLE PA 18936

DATE 07/09/98
 DRAWN K.F.M.
 DESIGN K.F.M.
 CHECK J.E.
 PROJECT N/A
 MFG APPROVAL ROBERT O'LEARY
 DATE 7/15/98
 QA APPROVAL HOAN DUONG
 DATE 7/20/98

UNLESS OTHERWISE SPECIFIED:
 DIMENSIONS ARE IN INCHES

TOLERANCES
 DECIMALS ANGULAR
 .X ± .02 ± 1/2°
 .XX ± .01
 .XXX ± .005

TITLE
 HSAMP1-T066-TC6-PA7

SCALE 2:1
 SHEET 1 of 2

REV
 C 56586 490140P00 1

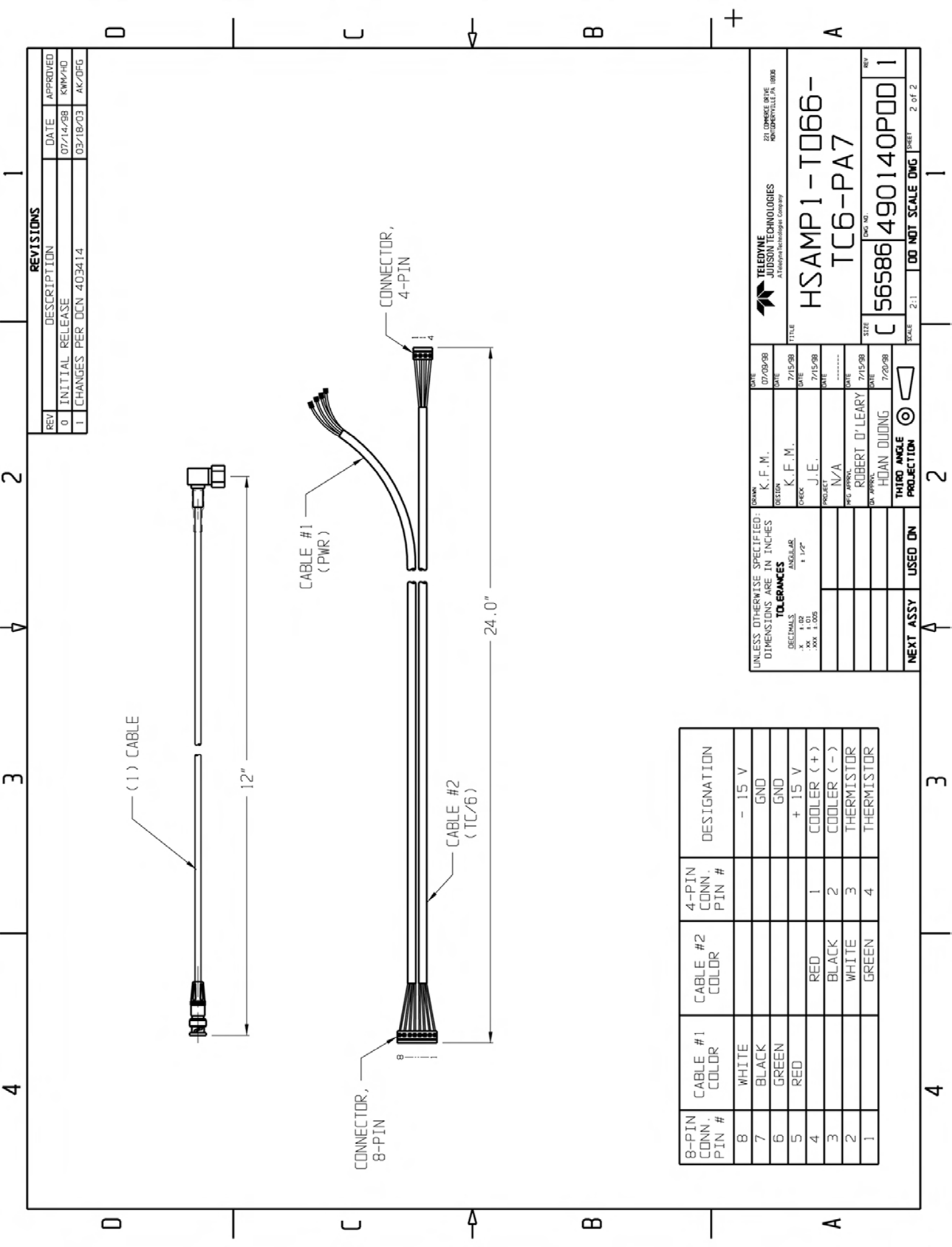
SIZE
 C

DO NOT SCALE DIMS

THIRD ANGLE PROJECTION

USED ON

NEXT ASSY



REVISIONS

REV	DESCRIPTION	DATE	APPROVED
0	INITIAL RELEASE	07/14/98	KMK/HO
1	CHANGES PER DCN 403414	03/18/03	AK/DFG

UNLESS OTHERWISE SPECIFIED:
DIMENSIONS ARE IN INCHES

TOLERANCES

DECIMALS	ANGULAR
X 1.02	1/2°
XX 1.01	
XXX 1.005	

DESIGN	DATE
K. F. M.	07/09/98
K. F. M.	7/15/98
J. E.	7/15/98
N/A	7/15/98
ROBERT O'LEARY	7/15/98
HUAN DUONG	7/20/98

TELEDYNE
JUDSON TECHNOLOGIES
A Teledyne Technologies Company

221 DUNDEE DRIVE
HARRISBURG, PA 17108

HSAMP 1-T066-TC6-PA7

SIZE: C 56586 490140P00 1

SCALE: 2:1

DO NOT SCALE DIM

SHEET: 2 of 2

8-PIN CONN. PIN #	CABLE #1 COLOR	CABLE #2 COLOR	4-PIN CONN. PIN #	DESIGNATION
8	WHITE			- 15 V
7	BLACK			GND
6	GREEN			GND
5	RED			+ 15 V
4		RED	1	COOLER (+)
3		BLACK	2	COOLER (-)
2		WHITE	3	THERMISTOR
1		GREEN	4	THERMISTOR