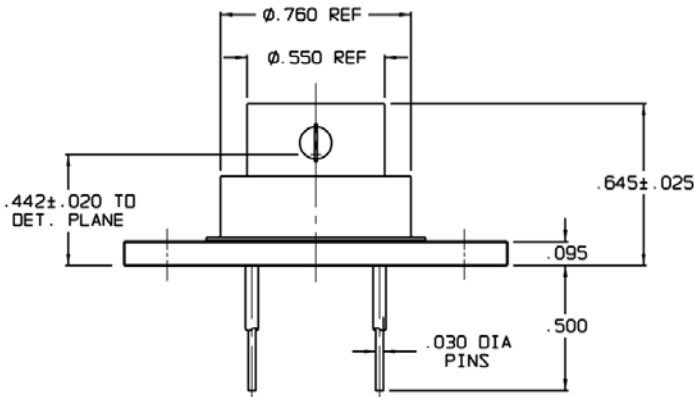


REVISIONS			
REV	DESCRIPTION	DATE	APPROVED
0	INITIAL RELEASE	08/09/02	WR/DFG
1	CHANGES PER DCN 403171	10/14/02	WR/DFG

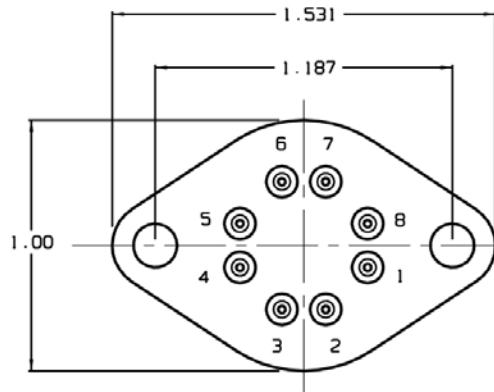


PIN	DESIGNATION	COLOR CODE
1	THERMISTOR	YELLOW
2	DET. CATHODE (-)	WHITE
3	DET. ANODE (+)	GREEN
4	COOLER (-)	BLACK
5	COOLER (+)	RED
6	CUT-OFF	CLEAR
7	GETTER	-----
8	THERMISTOR	YELLOW

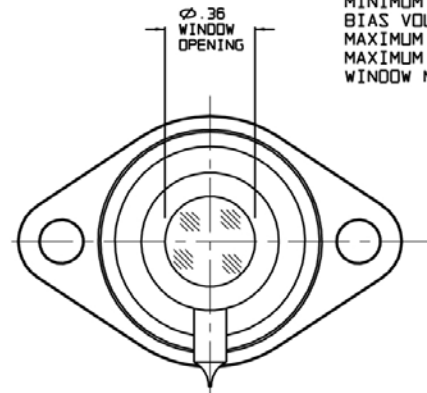
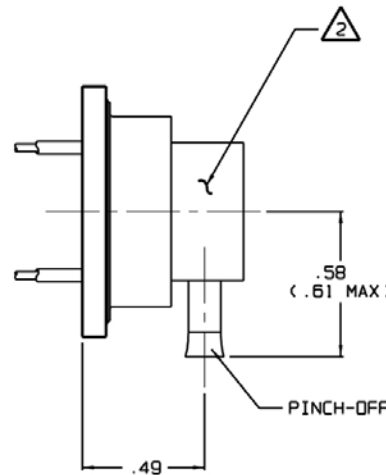
NOTES:

- EXCEPT AT WELD AREA, ALL EXPOSED SURFACES SHALL BE GOLD PLATED.
- DETECTOR CONCENTRIC TO TOP CAP O.D. WITHIN ±.015.
- PRODUCT MARKING.
- SPECIFICATIONS:

MATERIAL TYPE: PV HgCdTe 5.0 um
 ACTIVE AREA SIZE: 0.250 mm Dia
 PACKAGE: TO-3
 DETECTOR SPECIFICATIONS AT: -95° C
 MINIMUM D_w (PEAK, 10KHz, 1Hz): 3.8E10 cmHz^{1/2}W⁻¹
 MINIMUM RESPONSIVITY (PEAK, 900Hz): 2.2 A/W
 MINIMUM WAVELENGTH CUTOFF: 50% at 5.0 um
 WAVELENGTH PEAK (TYPICAL): 4.5 um
 MINIMUM SHUNT IMPEDANCE: 32 Mohms
 BIAS VOLTAGE (UNLESS NOTED): 0.0 V
 MAXIMUM REVERSE BIAS VOLTAGE (V_r): 0.2 V
 MAXIMUM DARK CURRENT at V_r=-1V: 20 nA
 WINDOW MATERIAL: Sapphire



(BOTTOM VIEW)



(TOP VIEW)

UNLESS OTHERWISE SPECIFIED DIMENSIONS ARE IN INCHES		TOLERANCES		TELETYPE JUDSON TECHNOLOGIES	
DECIMALS	ANGULAR	FRONT	DATE	20 CHERRY BENE WINDYVILLE, PA 1888	
± .005	± .10°	DESIGN	08-09-02	TITLE	
± .010	± .05°	BY	08-09-02	J19TE4: S-3VN-R250U	
± .015	± .02°	CHECKED	08-09-02	PART NO	
± .020	± .03°	DATE	08-12-02	0 56586 440053POD 1	
± .030	± .04°	BY	08-09-02	REV	
± .040	± .05°	DATE	08-12-02	DRAWN	
± .050	± .06°	BY	08-12-02	CHECK	
± .060	± .07°	DATE	08-12-02	1 OF 1	
± .070	± .08°	BY	08-12-02	2.75:1	
± .080	± .09°	DATE	08-12-02	DO NOT SCALE DWG	
± .090	± .10°	BY	08-12-02	1 OF 1	
± .100	± .11°	DATE	08-12-02	1 OF 1	