

4

3

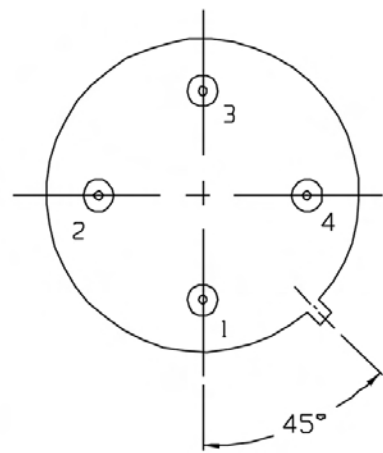
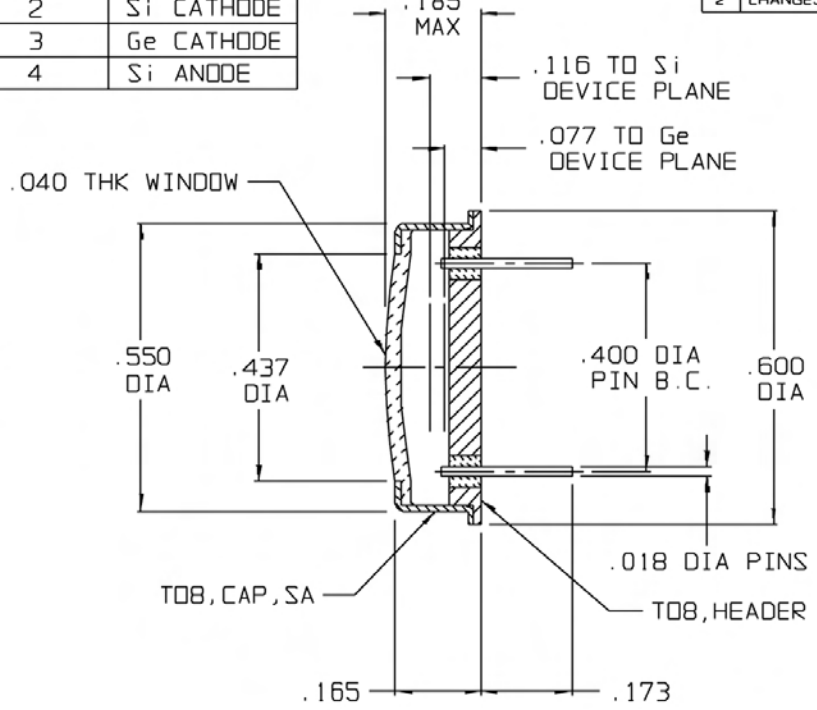
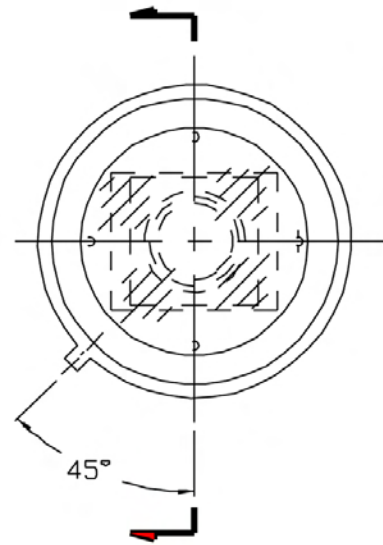
2

1

PIN No.	CONNECTION
1	Ge ANODE
2	Si CATHODE
3	Ge CATHODE
4	Si ANODE

REVISIONS			
REV	DESCRIPTION	DATE	APPROVED
0	INITIAL RELEASE	09/28/98	FC/HD
1	CHANGES PER DCN 402025	03/08/00	WR/DFG
2	CHANGES PER DCN 402085	04/26/00	WR/DFG

TOP VIEW



NOTES:

- TEST PER ATP No. 230007.
- DETECTOR SPECIFICATIONS:
 MATERIAL: Si
 DETECTOR ACTIVE SIZE: 5.0 mm DIA
 WAVELENGTH RANGE: 400-1000 nm
 RESPONSIVITY AT 800 nm: 0.45 A/W MIN
 DETECTOR SHUNT IMPEDANCE: 40 Mohms TYPICAL
 MATERIAL: Ge-Si
 DETECTOR ACTIVE SIZE: 5.0 mm DIA
 WAVELENGTH RANGE: 1100-1800 nm
 MINIMUM RESPONSIVITY AT 800 nm: 0.60 A/W
 MINIMUM DETECTOR SHUNT IMPEDANCE: 14 Kohms
 DETECTOR PACKAGE: TO-9
 WINDOW MATERIAL: BOROSILICATE GLASS

UNLESS OTHERWISE SPECIFIED: DIMENSIONS ARE IN INCHES: TOLERANCES		DRAWN: K.F.M. DATE: 09/28/98 DESIGN: K.F.M. DATE: 10/2/98 CHECK: F. CECI DATE: 10/2/98 PROJECT: N/A DATE: ----- ENG. APPROVAL: ROBERT O'LEARY DATE: 10/7/98 DTA APPROVAL: HOAN DUONG DATE: 10/2/98
DECIMALS	ANGULAR	
x ± .02	± 1/2°	
.xx ± .01		
.xxx ± .005		
NEXT ASSY	USED ON	THIRD ANGLE PROJECTION

TELEDYNE JUDSON TECHNOLOGIES
 A Teledyne Technologies Company
 221 COMMERCE DRIVE
 MONTGOMERYVILLE, PA, USA 18936

TITLE: **J16Si-8A4-R05M-SC**

SIZE: **8** DWG NO: **56586460129P00** REV: **2**

SCALE: 4:1 DO NOT SCALE DWG SHEET 1 of 1

4

3

2

1