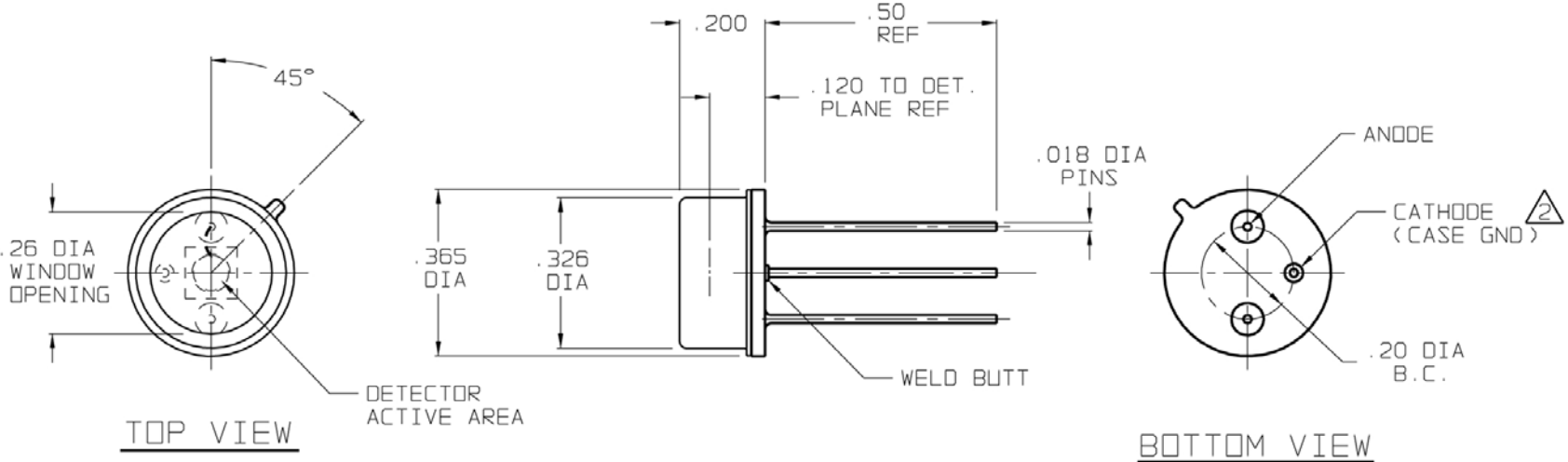


REVISIONS			
REV	DESCRIPTION	DATE	APPROVED
0	INITIAL RELEASE	06/29/99	FC/HD



**NOTES:**

- DETECTOR CENTERED WITHIN +/- .005 ON HEADER.
- CATHODE IS ISOLATED FROM HEADER.
- SPECIFICATION FOR TEMPERATURE InAs DETECTOR:  
 MATERIAL TYPE: InAs  
 ACTIVE AREA (DIA): 2.0 mm  
 PACKAGE SPECIFICATION: TO-5  
  
 DETECTOR SPECIFICATIONS AT: 22 °C  
 MINIMUM RESPONSIVITY (LAMBDA PEAK): 0.8 A/W  
 MINIMUM DETECTOR SHUNT IMPEDANCE @ Vr -10mV: 5 ohms  
 WINDOW MATERIAL: SAPPHIRE

UNLESS OTHERWISE SPECIFIED: DIMENSIONS ARE IN INCHES:		DRN: K.F.M.	DATE: 06/29/99	TELEDYNE JUDSON TECHNOLOGIES <small>A Teledyne Technologies Company</small>		221 COMMERCE DRIVE MONTGOMERYVILLE, PA 18936	
<b>TOLERANCES</b>		DESIGN: K.F.M.	DATE: 6/29/99	TITLE: J12-5AP-R02M			
DECIMALS	ANGULAR	CHECK: FRANK CECI	DATE: 6/30/99	SIZE: B	DWG NO: 56586	REV: 0	
.X ± .02	± 1/2°	PROJECT: N/A	DATE: -----	SCALE: 4:1	DO NOT SCALE DWG	SHEET: 1 of 1	
.XX ± .01		PRG APPRVL: WILLIAM ROLLS	DATE: 6/30/99				
.XXX ± .005		QA APPRVL: HOAN DUONG	DATE: 6/30/99				
NEXT ASSY	USED ON	THIRD ANGLE PROJECTION					