

4

3

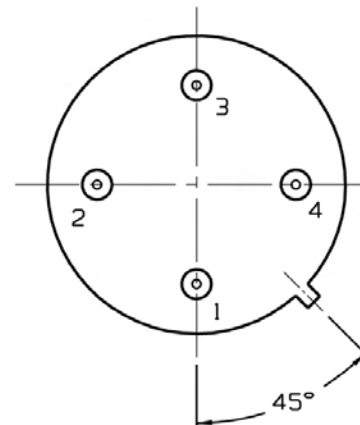
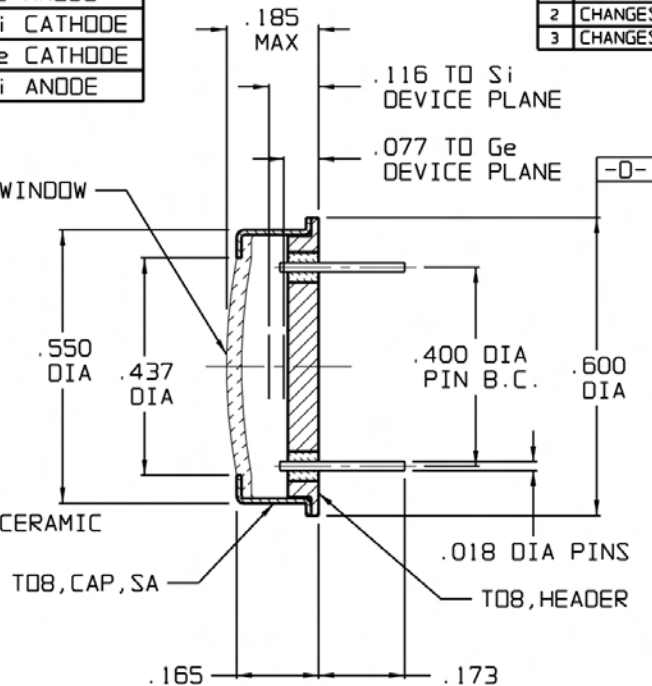
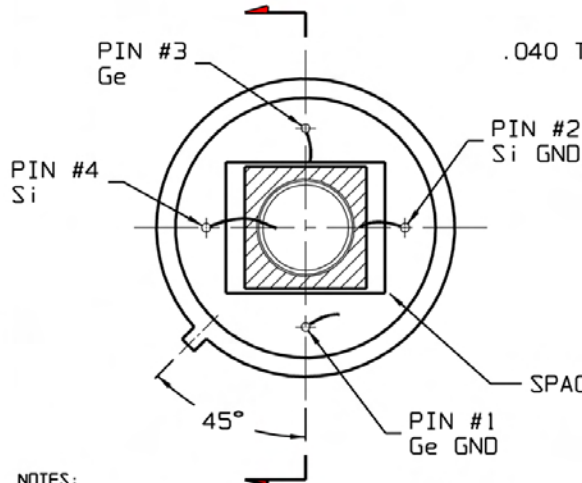
2

1

PIN No.	CONNECTION
1	Ge ANODE
2	Si CATHODE
3	Ge CATHODE
4	Si ANODE

REVISIONS			
REV	DESCRIPTION	DATE	APPROVED
0	INITIAL RELEASE	08/26/98	KMM/HD
1	CHANGES PER DCN 401174	10/14/98	FC/HD
2	CHANGES PER DCN 401180	10/20/98	OG/MW
3	CHANGES PER DCN 402085	04/26/00	WR/DFG

TOP VIEW
WITH CAP REMOVED



NOTES:

- TEST PER ATP No. 230007.
- DETECTOR TO BE CONCENTRIC WITHIN $\pm .015$ WITH RESPECT TO HEADER DIAMETER $-0-$.
- SPECIFICATIONS FOR Ge/SILICON BICOLOR DETECTOR (ROOM TEMPERATURE)
 SILICON - ACTIVE SIZE (DIA): 5.0 mm
 WAVELENGTH RANGE: 400 nm-1000 nm
 RESPONSIVITY (850 nm) MIN: 0.45 A/W
 SHUNT IMPEDANCE (22 °C): 40 Mohms
 NEP (PEAK AND 300Hz): $1E-14$ (W/Hz^{1/2}) TYPICAL
 GERMANIUM - ACTIVE SIZE (DIA): 3.0 mm
 WAVELENGTH RANGE: 1100-1800 nm
 RESPONSIVITY 1300 nm MIN: 0.60 A/W
 SHUNT IMPEDANCE (22 °C): 35 Kohms
 NEP (PEAK AND 300Hz): $6.0E-13$ (W/Hz^{1/2}) TYPICAL
 PACKAGE: TO-8
 WINDOW MATERIAL: BOROSILICATE (GLASS)

UNLESS OTHERWISE SPECIFIED:
DIMENSIONS ARE IN INCHES:
TOLERANCES

DECIMALS	ANGULAR
.X $\pm .02$	$\pm 1/2^\circ$
.XX $\pm .01$	
.XXX $\pm .005$	

DATE	BY	APPROVAL
05/01/98	K.F.M.	DRWY
8/26/98	K.F.M.	DESIGN
8/26/98	B.D./M.W.	CHECK
-----	N/A	PROJECT
8/26/98	M. WALKER	PIG APPROV
8/26/98	HOAN DUONG	QA APPROV

DATE	BY	APPROVAL
05/01/98	K.F.M.	DRWY
8/26/98	K.F.M.	DESIGN
8/26/98	B.D./M.W.	CHECK
-----	N/A	PROJECT
8/26/98	M. WALKER	PIG APPROV
8/26/98	HOAN DUONG	QA APPROV



TELEDYNE JUDSON TECHNOLOGIES
A Teledyne Technologies Company

221 COMMERCE DRIVE
MONTGOMERYVILLE, PA 18936

TITLE
J16Si-8A4-R03M-SC

SIZE	DWG NO.	REV
B	56586	460063-1P00
		3

SCALE 4:1 DO NOT SCALE DWG SHEET 1 of 1

4

3

2

1