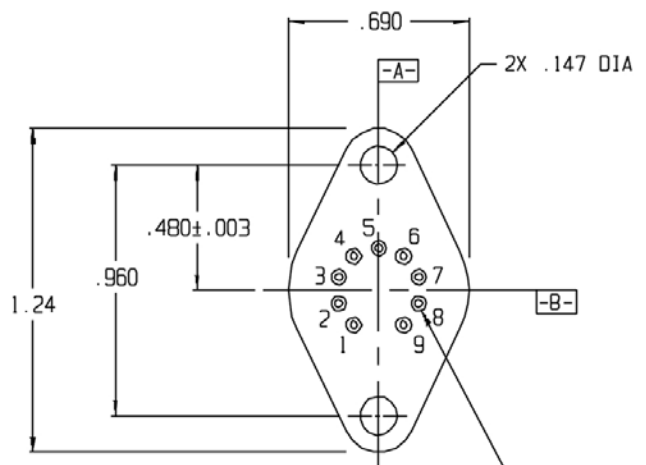
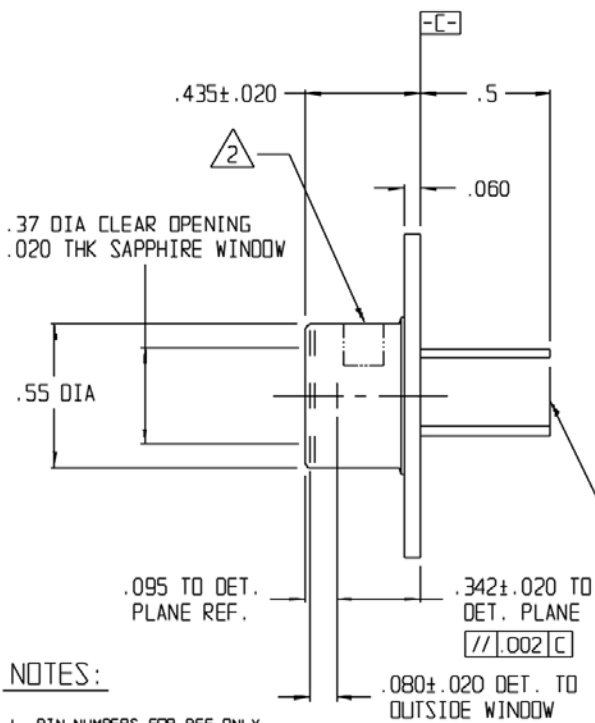


REVISIONS			
REV	DESCRIPTION	DATE	APPROVED
0	INITIAL RELEASE	05/19/99	FC/HD
1	CHANGES PER DCN 402341	01/11/01	WR/DFG



PIN	FUNCTION	COLOR CODE
1	COOLER (+)	RED
2	N/C	CLEAR
3	N/C	CLEAR
4	N/C	CLEAR
5	THERMISTOR	YELLOW
6		
7	DETECTOR	GREEN
8	DETECTOR	WHITE
9	COOLER (-)	BLACK

**NOTES:**

- PIN NUMBERS FOR REF ONLY.
- PRODUCT MARKING.
- DETECTOR CENTERED TO WITHIN +/- .015 WITH RESPECT TO  $\square$ -A- AND  $\square$ -B- OF MOUNTING HOLES.
- MATES WITH P/N 300359 SOCKET, TO-66, 9-PIN.

5. DETECTOR SPECIFICATIONS:  
 MATERIAL TYPE: HgCdTe  
 ACTIVE AREA SIZE: 0.250 mm x 0.250 mm  
 DETECTOR SPECIFICATIONS AT: -65 °C  
 MINIMUM  $D^*$  (PEAK, 10KHz, 1Hz): 2.5E10 cmHz<sup>1/2</sup> W<sup>-1</sup>  
 TYPICAL RESPONSIVITY (PEAK, 900Hz): 10,000 V/W  
 MINIMUM WAVELENGTH CUTOFF: 5.0 um AT 50Z  
 WINDOW MATERIAL: SAPPHIRE AR COATED 1-6 um  
 PACKAGE DESCRIPTION: TO-66

UNLESS OTHERWISE SPECIFIED: DIMENSIONS ARE IN INCHES: TOLERANCES	DESIGNER K.F.M.	DATE 04/21/99
DECIMALS x ± .02 .xx ± .01 .xxx ± .005	CHECKER K.F.M.	DATE 5/19/99
ANGULAR ± 1/2°	PROJECT FRANK CECI	DATE 5/19/99
	DWG APPROVAL N/A	DATE -----
	DATE APPROVAL WILLIAM ROLLS	DATE 5/19/99
	DATE APPROVAL HOAN QUONG	DATE 5/19/99
NEXT ASSY	USED ON	THIRD ANGLE PROJECTION

		221 COMMERCE DRIVE MONTGOMERYVILLE, PA, USA 18936	
TITLE <b>J15TE3:5-66C-S250U</b>			
SIZE <b>8</b>	DWG NO. <b>56586</b>	REV <b>1</b>	REV <b>1</b>
SCALE 2:1		DO NOT SCALE DWG	
SHEET		1 of 1	