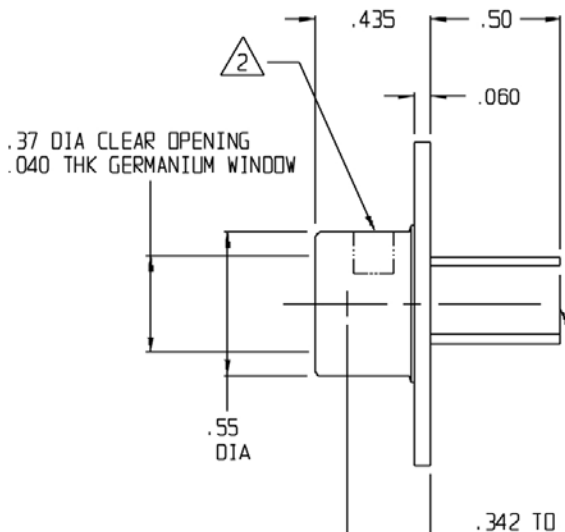
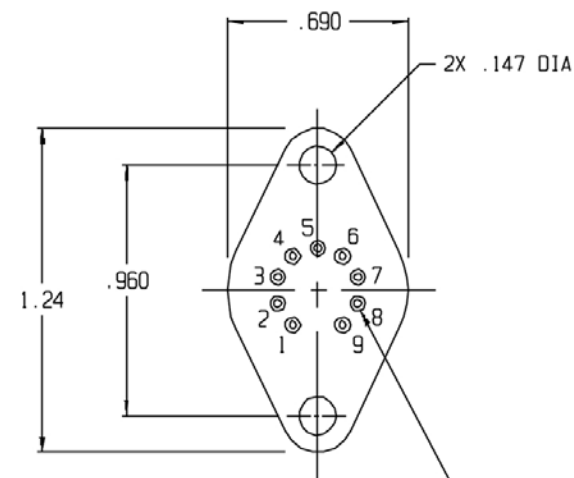


REVISIONS			
REV	DESCRIPTION	DATE	APPROVED
0	INITIAL RELEASE	11/27/01	DD/DFG



.37 DIA CLEAR OPENING
.040 THK GERMANIUM WINDOW



BOTTOM VIEW

PIN CHART

PIN	FUNCTION	COLOR CODE
1	COOLER (+)	RED
2	CASE (GND)	CLEAR
3	N/C	CLEAR
4	N/C	
5	THERMISTOR	YELLOW
6		
7	DETECTOR	WHITE
8		
9	COOLER (-)	BLACK

NOTES:

- ① PIN NUMBERS FOR REF ONLY.
- ② PRODUCT MARKING.

3. PACKAGE SPECIFICATIONS:

MATERIAL TYPE: HgCdTe
 ACTIVE AREA SIZE: 0.250 mm x 0.250 mm
 DETECTOR SPECIFICATIONS AT: -55 °C

MINIMUM D* (PEAK, 10KHz, 1Hz): 1.0E08 cmHz^{1/2}W⁻¹
 MINIMUM RESPONSIVITY (PEAK, 900Hz): 5 V/W TYPICAL
 WAVELENGTH PEAK: 10 um APPROXIMATELY
 MINIMUM WAVELENGTH CUTOFF: 50% AT 11um APPROXIMATELY

WINDOW MATERIAL: Ge AR COATED 2-14 um
 PACKAGE DESCRIPTION: T0-66

UNLESS OTHERWISE SPECIFIED: DIMENSIONS ARE IN INCHES: TOLERANCES		DRAWN K. F. M. DATE 11/26/01
DECIMALS X ± .02 .XX ± .01 .XXX ± .005	ANGULAR ± 1/2°	DESIGN K. F. MARSHALL DATE 11/27/01
		CHECK FRANK CECI DATE 11/27/00
		PROJECT DON DOLAN DATE 11/28/01
		ENGR. APPROVAL WILLIAM ROLLS DATE 11/28/01
		QA APPROVAL D. F. GREENE DATE 30NOV01
NEXT ASSY	USED ON	THIRD ANGLE PROJECTION

		221 COMMERCE DRIVE HUNZBERGERSVILLE, PA 15036	
TITLE J1STE3: 10-66GE-S250U			
SIZE 8	DWG NO. 56586	REV 0	
SCALE 2:1	DO NOT SCALE DWG	SHEET 1 of 1	