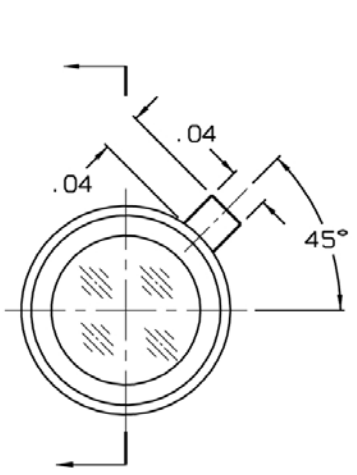
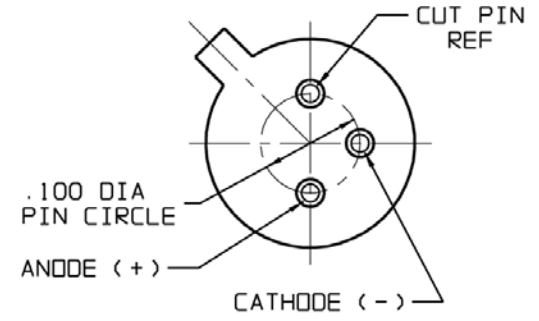
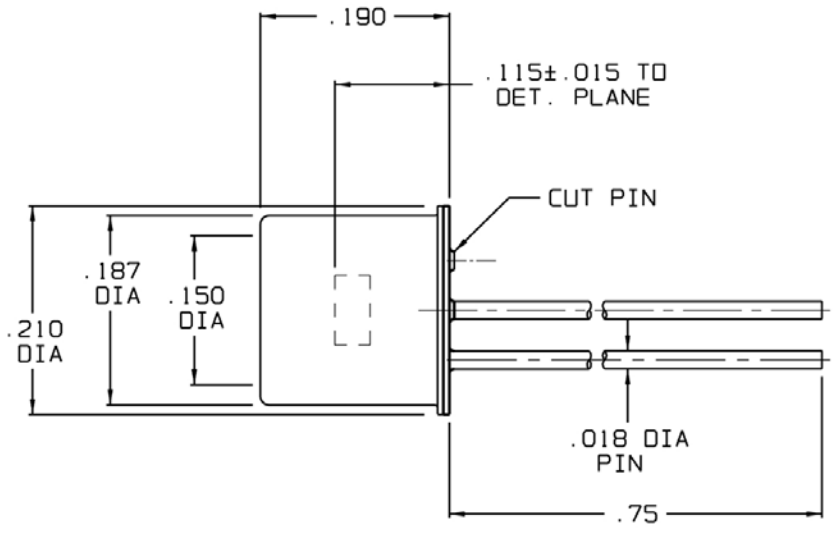


REVISIONS			
REV	DESCRIPTION	DATE	APPROVED
0	INITIAL RELEASE	06/05/02	WR/DFG



TOP VIEW



BOTTOM VIEW

NOTES:

1. DETECTOR CENTERED WITHIN ±.005 ON BASE.

2. SPECIFICATIONS:

MATERIAL TYPE:	PV-HgCdTe-2.8 um
ACTIVE AREA SIZE:	0.250 mm Dia
PACKAGE SPECIFICATION:	TO-18
DETECTOR SPECIFICATION AT:	22 °C (Room Temperature)
BIAS VOLTAGE:	0.0 V (Unless Noted)
MINIMUM D* (PEAK, 10KHz, 1Hz):	2.0E10 cmHz ^{1/2} W ⁻¹
MINIMUM PEAK RESPONSIVITY:	1.3 A/W
WAVELENGTH CUTOFF:	50% at 2.8 um (Typical)
MINIMUM SHUNT IMPEDANCE:	7.5 Kohms
MAXIMUM REVERSE BIAS VOLTAGE (Vr):	0.2 Volts
MAXIMUM DARK CURRENT (Id) AT Vr=0.1V:	20 uA
WINDOW MATERIAL:	Sapphire

UNLESS OTHERWISE SPECIFIED: DIMENSIONS ARE IN INCHES:	
TOLERANCES	
DECIMALS	ANGULAR
.X ±.02	± 1/2°
.XX ±.01	
.XXX ±.005	
NEXT ASSY	USED ON

DRWN	K.F.M.	DATE	06/05/02
DESIGN	K.F. MARSHALL	DATE	6/5/02
CHECK	FRANK CECI	DATE	6/5/2002
PROJECT	N/A	DATE	-----
FIG APPROV	WILLIAM ROLLS	DATE	6/5/02
QA APPROV	D.F. GREENE	DATE	6/7/02

		221 COMMERCE DRIVE MONTGOMERYVILLE, PA 18936	
TITLE			
J19:2.8-18C-R250U			
SIZE	DWG NO.	REV	
B	56586	440045POD	0
SCALE	DO NOT SCALE DWG		SHEET 1 of 1
8:1			

A

A