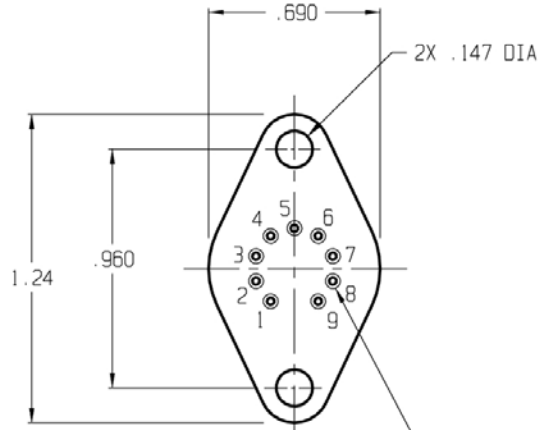
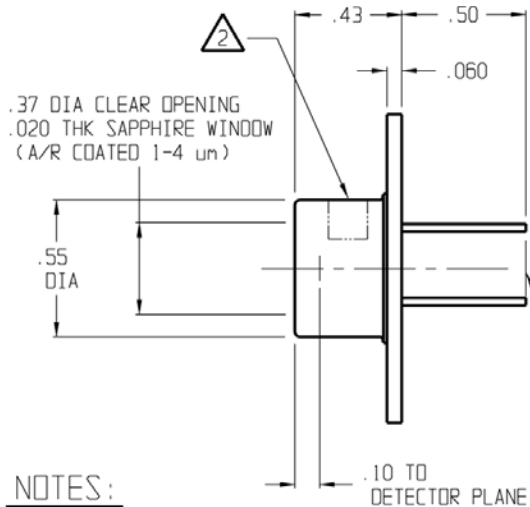


REVISIONS			
REV	DESCRIPTION	DATE	APPROVED
0	INITIAL RELEASE	12/04/97	DG/JAH
1	CHANGES PER DCN 401538	04/29/99	FC/HD



PIN CHART

PIN	FUNCTION	COLOR CODE
1	COOLER (+)	RED
2	CASE (GND)	CLEAR
3	DETECTOR (+)	GREEN
4	DETECTOR (-)	WHITE
5	THERMISTOR	YELLOW
6		
7	N/C	CLEAR
8		
9	COOLER (-)	BLACK

NOTES:

- PIN NUMBERS FOR REF ONLY.
- PRODUCT MARKING.
- MATES WITH P/N 300359 SOCKET, TO-66, 9-PIN.
- WINDOW MATERIAL: SAPPHIRE AR COATED

- PACKAGE SPECIFICATIONS: TO-66
ACTIVE AREA SIZE: 1.0 mm DIA
DETECTOR TESTED AT (DEGREES CELSIUS): -65 °C
RESPONSE (A/W) AT 1.3 μ m: => .25 A/W
PEAK RESPONSE (A/W): => 1.5 A/W
DETECTOR SHUNT IMPEDANCE (-65 °C): => 15 Kohms
DETECTIVITY (PEAK, 1.0KHz, 1Hz): => 1.0E11
DETECTOR LINEAR TO (nA): => 2.0

PINS OMITTED FOR CLARITY

BOTTOM VIEW

UNLESS OTHERWISE SPECIFIED: DIMENSIONS ARE IN INCHES:		DRN	K.F.M.	DATE	11/19/97	 221 COMMERCE DRIVE MONTGOMERYVILLE, PA 18936
TOLERANCES		DESIGN	DRHAN GINGIS	DATE	12-04-97	
DECIMALS	ANGULAR	CHECK	J.E.	DATE	12/9/97	TITLE
.X ± .02	± 1/2°	PROJECT	N/A	DATE	-----	J12TE3-66D-R01M
.XX ± .01		PRG APPRVL	ROBERT O'LEARY	DATE	3/17/98	SIZE
.XXX ± .005		QA APPRVL	J HALL	DATE	3/17/98	B 56586
						DWG NO.
						420056P00
						REV
						1
NEXT ASSY	USED ON	THIRD ANGLE PROJECTION		SCALE	2:1	DO NOT SCALE DWG
						SHEET 1 of 1