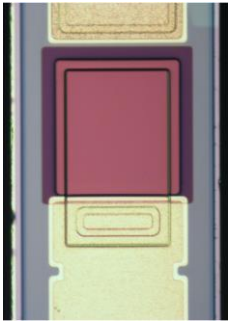
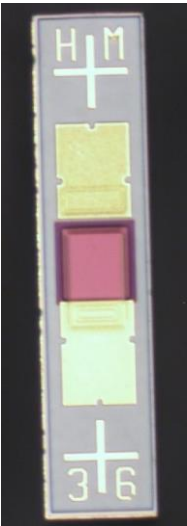
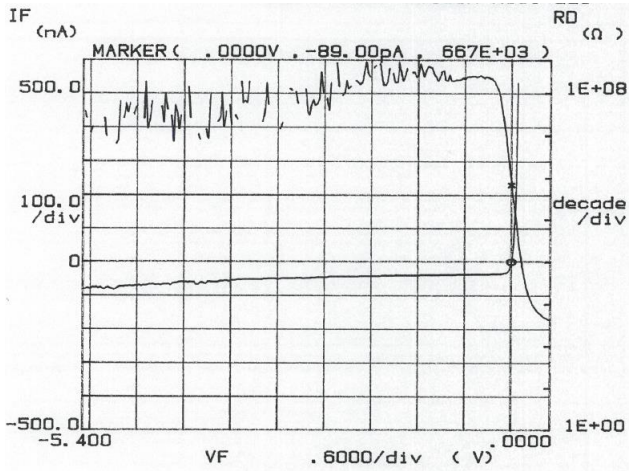


SWIR PV MCT Detectors, 2.5 um, High Performance at Room Temp

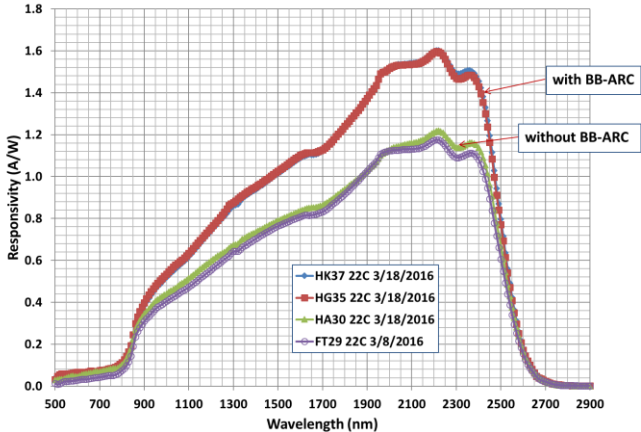


Detector size ~210µm

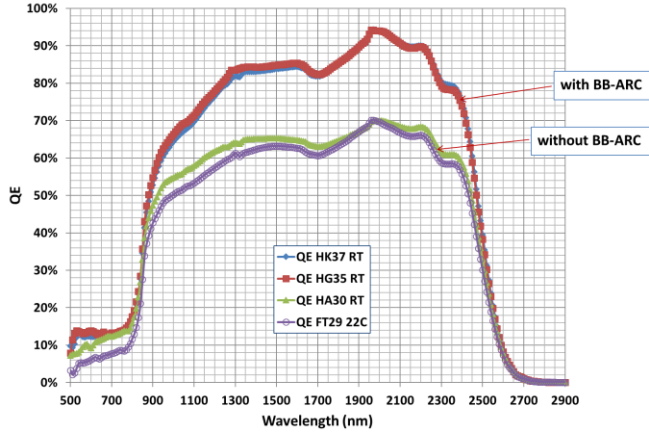


Excellent dark current, shunt resistance, breakdown voltage, and low capacitance at room temperature

Spectral responsivity



Spectral QE



900-2500nm wavelength band. Significant QE enhancement over entire band with board band antireflective coating (BB-ARC) applied.

High Performance 2.5um SWIR MCT Detector Specs

Detector Model Number	Active Size Diameter (mm)	Operating Temp. (°C)	50% Cutoff Wavelength (um) typ	Peak Wavelength (um) typ	Peak Responsivity (A/W) min	Shunt impedance (Ohm)		Short Circuit Current (A) typ	Dark Current @ -0.1V (A)		Peak D* (Jones)		NEP (W/rt-Hz) @ peak wavelength		Capacitance @ 0V (pF) typ
						min	typical		typ	max	min	typ	typ	max	
J19-2.5-xxx-S210U	215x205um	22	2.5	2.2	1.1	2.5E+05	5.0E+05	5.0E-10	5.0E-08	2.0E-07	9.0E+10	1.3E+11	1.6E-13	2.3E-13	30
J19-2.5-xxx-S210U-ARC	215x205um	22	2.5	2.2	1.3	2.5E+05	5.0E+05	5.0E-10	5.0E-08	2.0E-07	1.1E+11	1.5E+11	1.4E-13	2.0E-13	30
J19-2.5-18C-R01M	1.00	22	2.5	2.2	1.1	1.0E+04	2.0E+04	1.2E-08	1.0E-06	4.0E-06	7.6E+10	1.1E+11	8.2E-13	1.2E-12	600
J19TE1:2.5-37S-S210U	215x205um	-20	2.5	2.2	1.1	5.0E+06	1.0E+07	5.0E-10	2.0E-09	8.0E-09	4.2E+11	5.9E+11	3.6E-14	4.9E-14	30
J19TE1:2.5-37S-S210U-ARC	215x205um	-20	2.5	2.2	1.3	5.0E+06	1.0E+07	5.0E-10	2.0E-09	8.0E-09	5.0E+11	6.9E+11	3.0E-14	4.2E-14	30
J19TE1:2.5-37S-S210U-40	215x205um	-20	2.5	2.2	1.1	5.0E+06	1.0E+07	5.0E-11	2.0E-09	8.0E-09	4.4E+11	6.1E+11	3.4E-14	4.8E-14	30
J19TE1:2.5-37S-S210U-40-ARC	215x205um	-20	2.5	2.2	1.3	5.0E+06	1.0E+07	5.0E-11	2.0E-09	8.0E-09	5.1E+11	7.3E+11	2.9E-14	4.1E-14	30
J19TE1:2.5-37S-R01M	1.00	-20	2.5	2.2	1.1	2.0E+05	4.0E+05	1.2E-08	5.0E-08	2.0E-07	3.6E+11	5.0E+11	1.8E-13	2.5E-13	600
J19TE2:2.5-66D-S210U	215x205um	-40	2.5	2.2	1.1	5.0E+07	1.0E+08	5.0E-10	5.0E-10	2.0E-09	1.1E+12	1.4E+12	1.5E-14	1.9E-14	30
J19TE2:2.5-66D-S210U-ARC	215x205um	-40	2.5	2.2	1.3	5.0E+07	1.0E+08	5.0E-10	5.0E-10	2.0E-09	1.3E+12	1.6E+12	1.3E-14	1.6E-14	30
J19TE2:2.5-66D-S210U-40	215x205um	-40	2.5	2.2	1.1	5.0E+07	1.0E+08	5.0E-11	3.0E-10	1.2E-09	1.4E+12	1.9E+12	1.1E-14	1.5E-14	30
J19TE2:2.5-66D-S210U-40-ARC	215x205um	-40	2.5	2.2	1.3	5.0E+07	1.0E+08	5.0E-11	3.0E-10	1.2E-09	1.7E+12	2.3E+12	9.3E-15	1.3E-14	30
J19TE2:2.5-66D-R01M	1.00	-40	2.5	2.2	1.1	1.5E+06	3.0E+06	1.2E-08	1.0E-08	4.0E-08	8.7E+11	1.1E+12	8.2E-14	1.0E-13	600
J19TE3:2.5-66D-S210U	215x205um	-65	2.5	2.2	1.1	5.0E+08	1.0E+09	5.0E-10	5.0E-10	2.0E-09	1.7E+12	1.8E+12	1.2E-14	1.2E-14	30
J19TE3:2.5-66D-S210U-ARC	215x205um	-65	2.5	2.2	1.3	5.0E+08	1.0E+09	5.0E-10	5.0E-10	2.0E-09	2.0E+12	2.1E+12	1.0E-14	1.0E-14	30
J19TE3:2.5-66D-S210U-40	215x205um	-65	2.5	2.2	1.1	5.0E+08	1.0E+09	5.0E-11	6.0E-11	2.4E-10	3.7E+12	4.4E+12	4.8E-15	5.7E-15	30
J19TE3:2.5-66D-S210U-40-ARC	215x205um	-65	2.5	2.2	1.3	5.0E+08	1.0E+09	5.0E-11	6.0E-11	2.4E-10	4.4E+12	5.2E+12	4.0E-15	4.8E-15	30
J19TE3:2.5-66D-R01M	1.00	-65	2.5	2.2	1.1	1.5E+07	3.0E+07	1.2E-08	1.0E-08	4.0E-08	1.4E+12	1.5E+12	5.9E-14	6.2E-14	600

- 215 x 205 um size with no BB ARC
- 215 x 205 um size with BB ARC
- 1 mm size with no BB ARC